

Up to 250 kg



Description

Speedometer **designed to be embedded** or to be on the surface, ideal for verifying the tachometer and the mopeds limiter. High resistance steel frame assembled under the exclusive **"Perfect-fit" system**, which characterizes **all Ryme brand frames**, with great **adjustment accuracy**, avoiding the possibility of human errors in the assembly and giving an unbeatable appearance.

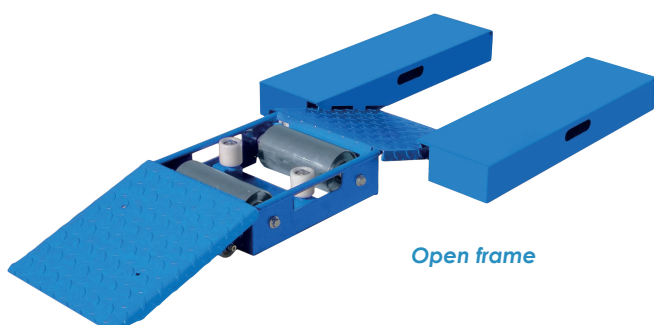
The speed measurement is obtained through an **incremental encoder mounted on the front roller axis**. Given the encoder resolution, a high reading **accuracy is obtained, higher than ± 0,1 km/h**.

The surface is smooth and coated with an antioxidant treatment that gives the rollers great durability.

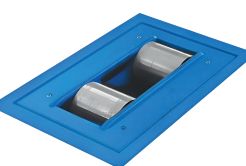
- ✔ Movable rear roller to adjust different wheel diameters
- ✔ Frame to be embedded or just on the surface

Technical Data and Dimensions

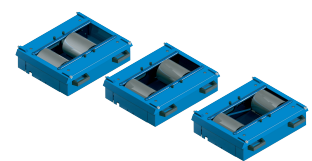
Max load per axle	250 kg
Max test speed	120 km/h
Rollers length	195 mm
Rollers diameter	150 mm
Distance between roller axes (3 positions)	a) 366 mm b) 308 mm c) 250 mm
Rolling resistance	< 0.1 Nm
Equipment weight	56 kg
Platform weight	9 kg



Open frame

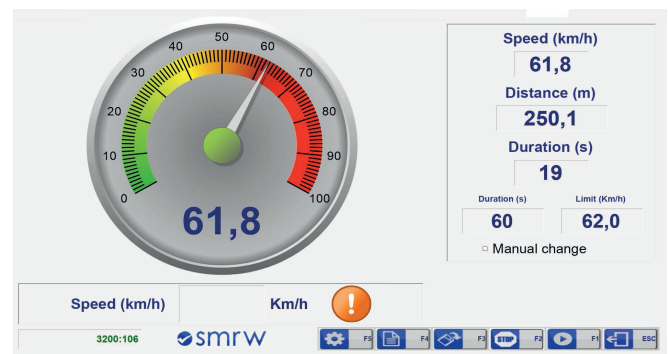


Embedded frame



Adjustable rollers distance

Software



Standard Equipment

- ✔ Speedometer frame
- ✔ Folding access ramps
- ✔ Foot-resting platforms
- ✔ Electronic control and SMRW software

Optional Equipment

Optional equipment	
	Voltage stabilizer
	Front wheel clamping clamp
	Pneumatic clamping clamp
	Calibration weights
	Ramp / Platform
	End-of-line console (consult)