

Up to 4 T



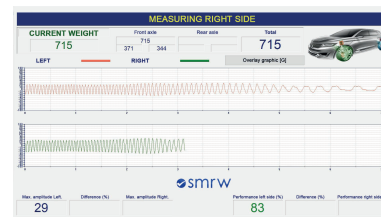
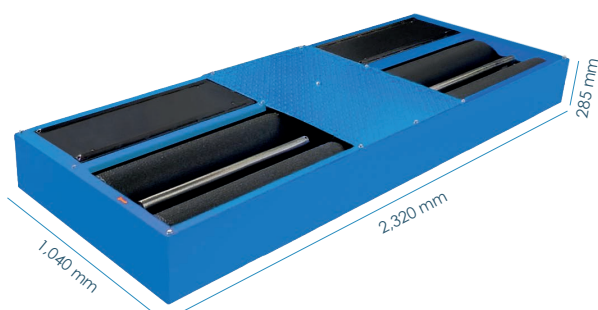
Description

The MONOBLOC Inspection Lane consists of a Light Vehicle **Brake Tester** and a **Suspension Bench** integrated in a single frame.

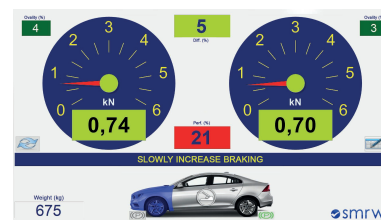
In this way, Ryme Worldwide offers a solution capable of measuring the suspension and braking of the vehicle in a single device.

Technical Data and Dimensions

Max. load per axle	4 T
Max/min track width	2,205 / 840 mm
Voltage	400 V - 50 Hz
Protection fuse	3 x 25 A
Thermal protector	2 x 9 - 12.5 A
Dimensions and weight	2,320 x 1,040 x 285 mm 650 Kg
Consumption	9.2 kW
Suspension Bench	
Engine power	1 x 3 kW
Excitation frequency	16 Hz
3 levels of valuation	A. Amplitude B. Performance C. Graphics
Brake Tester	
Engines power	2 x 4.8 kW
Diameter / Length rollers	205 / 684 (670 usable) mm
Distance between centres	400 mm
Adhesion coefficient	0.9 dry 0.7 wet
Measuring scale	0 - 6 kN
Step / measurement error	0.01 kn / 1 %



SUSPENSION BENCH SOFTWARE



LIGHT VEHICLES BRAKETESTER SOFTWARE

Standard Equipment

- ✓ Brake Tester + Suspension Bench
- ✓ Self-locking rollers for easy exit
- ✓ Electronic control and SMRW software

Optional Equipment

Optional equipment	
	Voltage stabilizer
	Start-up sensitizer
	Sensitizer start-up 230 V
	230 V Power Supply
	60 Hz Power supply
	Pedal dynamometer + receiver
	Hand-held dynamometer + receiver
	Self-supporting 4x4 free rollers
	Motorcycles software and kit
	Roller covers
	10 kg calibration weight
	30 kg calibration weight
	Light calibration lever
	End-of-line console (consult)